

Venue specification

MAIN STAGE

(Stora Scen)

KOLLEKTIVET
LIVET

VENUE INFO

Venue Concerts & Club

Capacity Total capacity 700. 650 sellable tickets.

Adress Stadsgårdsterminalen, 116 45 Stockholm

Artist booking & Music program spela@kollektivettivet.se

Private and commercial events bokning@kollektivettivet.se

Stage dimensions See mainstage drawing for exact measurements

Stage floor to ceiling 3,4 meter

Stage floor dimensions Approx 12 x 12 meter

Facility

-Dressing room

-Toilets

-Shower

-Fridge

-High bandwidth Wifi

Rigging

Fixed Stage, Sound and light.

Load in access

Street level, access with truck on the backside of the building (Godsmottagning).

Dead case storage

Behind and under the stage.

Get in, Get out By appointment

Parking By appointment

Catering Yes, see separate document

MAIN STAGE



BAR



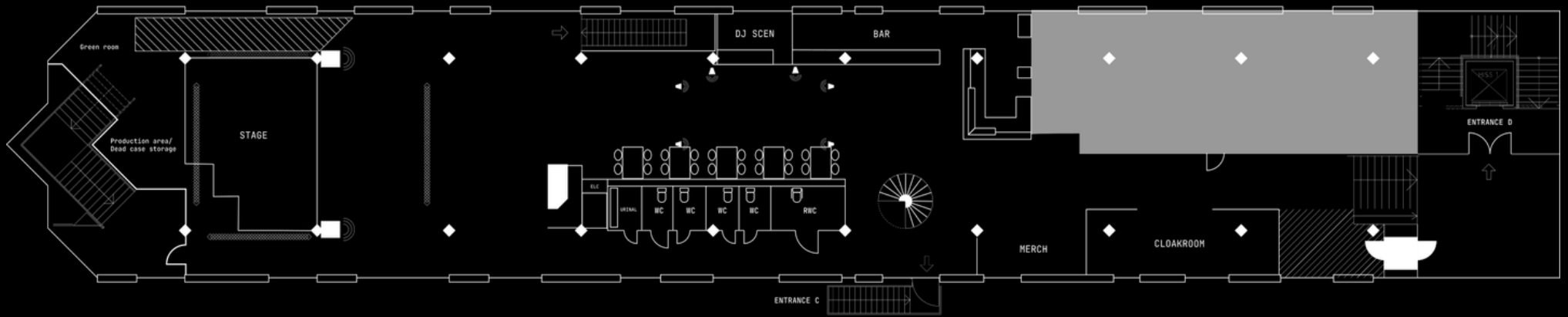
BAR DJ BOOTH



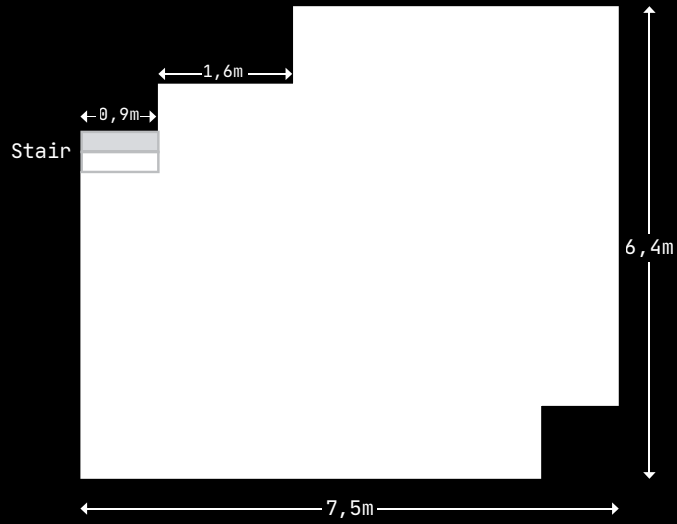
KARAOKEYRKAN/KOMPASSROSEN



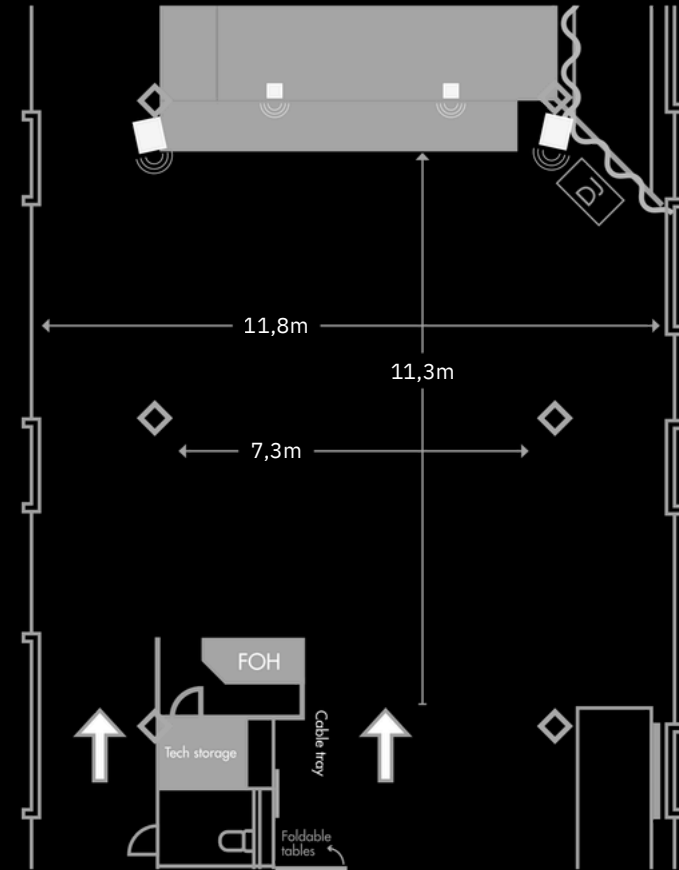
MAIN STAGE FLOOR PLAN



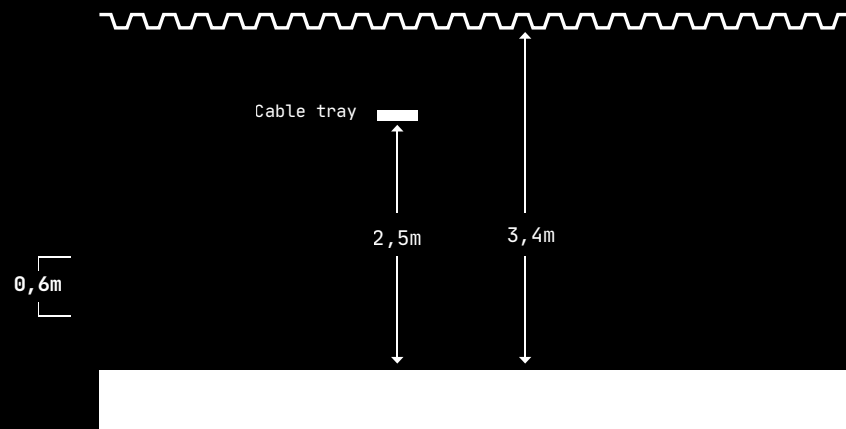
MAIN STAGE DIMENSIONS



MAIN STAGE FLOOR



STAGE TO CEILING



PA MAIN STAGE

PA

Dot Audio Line Array
2 x Dot Audio "Bull" Tops
2 x Dot Audio "Bull" Mids

Active 2-way coaxial enclosure
Usable bandwidth (-6dB) 100Hz - 20kHz
Nominal dispersion angle (hvxv) 90° × 10°
Transducers LF:4×8" neodymium
HF: 4×4" neodymium planar wave driver
Nominal impedance (-6 dB) 141 dB 1 enclosure
Maximum SPL (-6 dB) 126 dB 1 enclosure

RMS handling capacity (RMS/peak 10ms)
LF: 800/2400W
HF:320/1800W
Dimensions (W×H×D) 550x490x550mm
Weight (net) 34 Kg

Connectors 2 x Neutrik NL4
Material Baltic birch plywood
Finish Black Polyurethane coating

6 x Dot Audio Bass Reflex "550 Subs"
Bass reflex with LTAP vent
Dispersion Omni or cardioid depending on preset
Usable bandwidth (-6dB) 35Hz - 300Hz
Transducers LF 1 × 18" with 4" voice coil
Nominal impedance 8 Ω (+1/-1)
Maximum SPL (-6dB) 137dB
RMS handling capacity RMS/peak 10 ms LF: 1200/4800W
Dimensions (W×H×D) 730 x 550 x 550 mm
Weight (net) 48 Kg
Connectors 3xNeutrik NL4 (2 linked,1twisted 2+>1+/2- >1-)

Material Baltic birch plywood
Finish Black Polyurethane coating
Rigging Dual integrated pole mount socket M20

Amplifier stage

1 x Dot Audio 8:1, fixed and locked
1 x Dot Audio 4:5, fixed and locked
Eight channels of sonically pure Class D amplification Unique,
precise, 96kHz digital signal processing
85V to 240V Auto-sensing PSU
3,000 to 10,000 watts RMS total output
Analogue, AES3 and optional Dante TM digital network audio

Four channels of sonically pure Class D amplification
Unique, precise, 96kHz digital signal processing
85V to 240V Auto-sensing PSU
20,000 watts RMS total output
Analogue, AES3 and optional Dante TM digital network audio

Main Stage Wedge

6 x Passive 12" - Dot Audio

Wegde amplifier

2 x LAB GRUPPEN 1200C
On wheels, locked

PA BAR DJ BOOTH

PA

Dot Audio Tops

4 x "Vkyr 5"

2 x "iDE 15"

Active 2-way coaxial enclosure

Usable bandwidth (-6dB) 55Hz - 20kHz

Nominal dispersion angle (hvx) 60)conical

Transducers LF: 1x8"

HF: 1x1,73"

Nominal impedance 8 Ω (+1/-1)

Maximum SPL (-6 dB) 132 dB

RMS handling capacity (RMS/peak 10ms)

250/1000W

Dimensions (WxHxD) 440x515x475mm

Weight (net) 16 Kg

Connectors 2 x Neutrik NL4

Material Baltic birch plywood

Finish Black Polyurethane coating

Dot Audio Bass Reflex

2 x "Mungo 15"

Bass reflex, dual LTAP vents

Dispersion Omni or cardioid depending on preset

Usable bandwidth (-10dB) 27Hz - 200Hz

Transducer 1 x 15" 3" coil

Nominal impedance 8 Ω (+1/-1)

Maximum SPL (-6 dB) 130 dB

RMS handling capacity (RMS/peak 10ms)1500/6000W



Dimensions (WxHxD) 550x380x760mm

Weight (net) 31 Kg

Connectors 3xNeutrik NL4 (2 linked, 1 twisted 2+ > 1+ / 2- > 1-)

Material Baltic birch plywood

Finish Black Polyurethane coating

Rigging Integrated pole mount socket M20

Amplifier Bar

1 x Dot Audio 8:1, fixed and locked

LIGHT & FX

FOH Stand alone DMX controller

1 x Avolites T3 with Touch Screen PC and Titan
Up to 4 DMX universes

Front light

4 x Fresnel Minuette
1 x Fresnel led
2 x Led wash: RGB-W+UV

Stage light

9 x Led wash
RGB-W+UV: 3 SR, 3 SL, 2 upstage
2 x Led wash on floor upstage
2 x Blinders
4 x Moving Head Varytec hero beam
4 x CLF beam 6

FX

1 x Hazer Look Unique 2.1

Stage risers

3 x (1m x 2m x 20 -60cm)

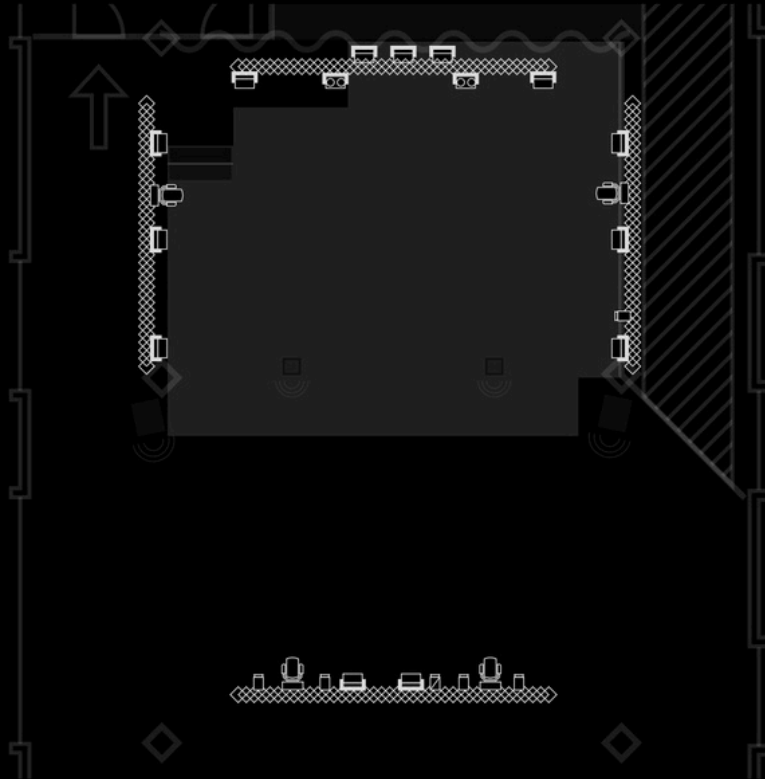
A/V

1 x LED wall optional per agreement
(Available for rent at extra cost)

Size 4.5 x 2 meters

P3 Pitch 1152x512 Pixels

Niva vx600 Video Controller



SOUND MAIN STAGE

FOH Live Console

1 x Allen & Heath SQ6

48 input channels, 36 bus digital mixer

96 kHz FPGA processing

25 Faders / 6 Layers

24 Mic/line

12 Stereo mixes

Stagebox/multi

1 x GX4816

48 XLR Input / 16 XLR Output 96kHz

10 x Radial pro48 DI

4 x Snake (Klotz StraightLink AES/EBU 81channels- 8/0 XLR)

Microphones

6 x Shure Beta58

2 x Shure Beta52

2 x Shure Beta91 A

4 x Shure SM57 Microphone Dynamic

4 x Sennheiser k421

3 x Sennheiser e906

2 x Lewitt ltc040

2 x Audio Technica ae3000

2 x Rode NT5 (pair)

Stands

Multiple K&M 210/9 Microphone stand, long boom

Multiple K&M 260 Microphone stand, black, round foot

Multiple K&M Small mic boom stand, telescopic bar

Multiple K&M Small mic boom stand

3 x Keyboard stand

DJ EQUIPMENT

1 x Pioneer DJM A9

1 x Pioneer DJM 900 Nexus

2 x Pioneer CDJ 3000

2 x Pioneer CDJ 2000 Nexus

2 x Technics 1200

DRESSING ROOM

Shower

2 Toilets

Pentry

Fridge

Mirrors

Hangout space

Can be divided in to two separated dressing rooms.

BACKSTAGE

Fridge

Mirror

Hangout space

GREENROOM



DRESSING ROOM





KOLLEKTIVET
LIVET